

16_46 Update Sequence

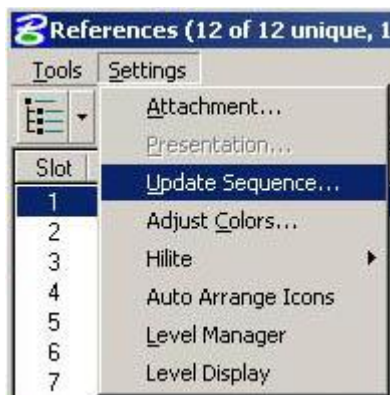
Question:

My question is I am getting ready to request half size plots for these five files. Before I do it I want to know about how to sequence the references so it plots correctly. I don't want exist row shape to cover up proposed pavement shape. Do I put exist row on the bottom and proposed pavement on the bottom? And put all my shapes first and line files last?

Answer:

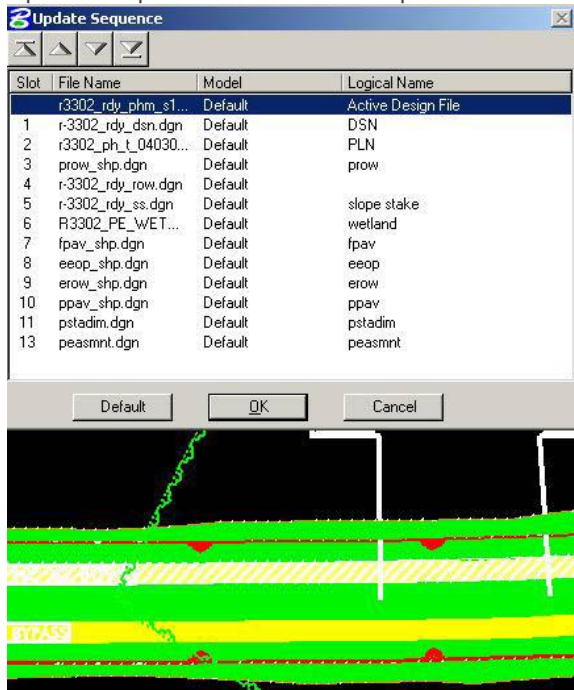
The re-sequencing of reference file is not necessary for plotting. Plotting of shapes that are on top of each other is handle through the design script (pen table) priority.

However, if you want to re-sequence the reference files (shapes) in the order you want to view them, then in the **Reference Dialog box**, click **Settings**, then **Update Sequence ...**



Reference files can then be moved up and down on top or underneath each other. The last file on the

Update Sequence list is the one updated last resulting in the topmost file layer to be loaded.



For example, if we moved the DSN file to last on the list and hit **OK** and **Update View** (refresh) the screen, the DSN file shows up on top of all other files, referenced or active.

